


The PRISTINE TimeWarp!

Reference Guide & Installation Manual



Pristine TimeWarp!  
Copyright (C) 1995  
Pristine Systems, Inc.  
All Rights Reserved  
Version 1.00

PRISTINE SYSTEMS, INC.

The Pristine TimeWarp! - Table of Contents

	<u>Page</u>
I. The Pristine TimeWarp!	1
1.0 Product Overview	1
1.1 Getting Started	1
1.2 Software Installation	1
II. Pristine TimeWarp! Main Menu	2
1.0 Pristine TimeWarp! Files Menu	3
1.1 Create a New TimeWarp! Program Event	4
1.2 Modify an Existing TimeWarp! Program Event	6
1.3 Remove Inactive TimeWarp! Program Events	6
2.0 Process the Pristine TimeWarp! Event Log	6
3.0 Activate the Pristine TimeWarp! Recorder	7
4.0 Pristine TimeWarp! Reports Menu	7
4.1 TimeWarp! Program Event Report	7
4.2 TimeWarp! Event Log Report	7
5.0 EXIT Pristine TimeWarp	7

## The PRISTINE TimeWarp!

### I. 1.0 Product Overview

The Pristine TimeWarp! Package has been designed to automatically schedule and/or record a hard disk audio event at a specific day and time for "ON AIR" play back sometime later. Pristine's TimeWarp! is compatible with a number of different digital audio boards, and hard disk recordings can vary in terms of the File ID, audio format, sample rate, and the number of channels (mono/stereo).

In addition, TimeWarp! can be scheduled to perform recordings for any or all days of the week, and for any or all hours of the day. Hard disk audio recordings can be:

- 1) stored on the computer's "local" disk drive, usually C:;
- 2) stored directly onto the hard disk of the ON AIR computer by designating a network drive (G:, H:, etc.) as the destination drive,
- 3) used in conjunction with RapidFire, in which case TimeWarp!! would do the scheduling and RapidFire the ON-AIR recording.

The Pristine TimeWarp! offers three options as to how to both start and end the recording process, namely, by:

- 1) CLOCK TIME ..... recordings begin/end by Time of Day
- 2) RELAY INPUT ..... recordings begin/end by Relay Input
- 3) AUDIO LEVEL ..... recordings begin/end by Audio Level

### 1.1 Getting Started

Carefully read this manual before attempting to install or use the Pristine TimeWarp!. By following the software installation instructions step by step, you should be up and running the Pristine TimeWarp! in only a few hours.

### 1.2 Software Installation

Insert the floppy diskette with the Pristine "TimeWarp!" into the computer's A: drive.

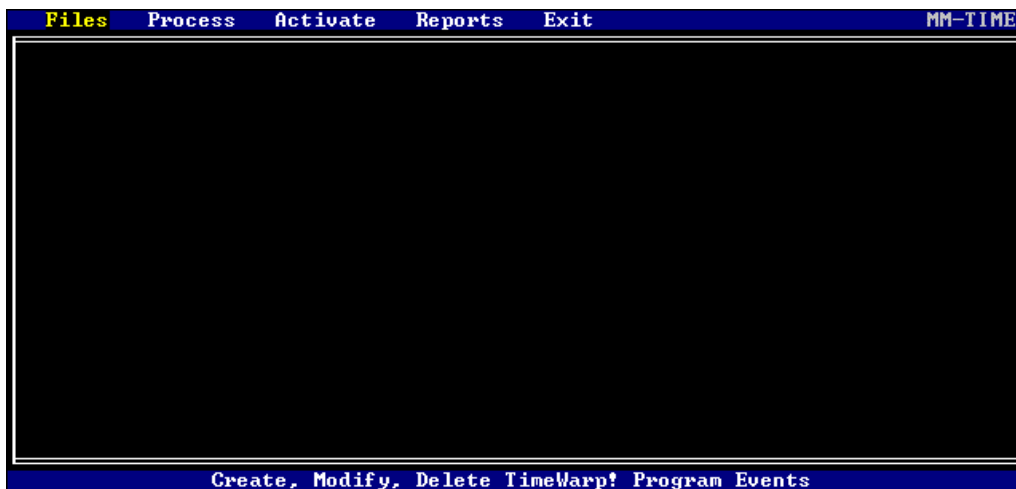
1. EXIT to DOS
2. Type A:TW-SETUP (press return)

\*\*\* Note: If the floppy drive containing "TimeWarp!" is in the "B: drive", then substitute B: for every occurrence of A:. \*\*\*

You will see several file names appear on the screen that have been copied from the installation diskette to the PRODUCTION computer's hard drive. Upon completion this of software installation the Pristine TimeWarp! program is ready to use.

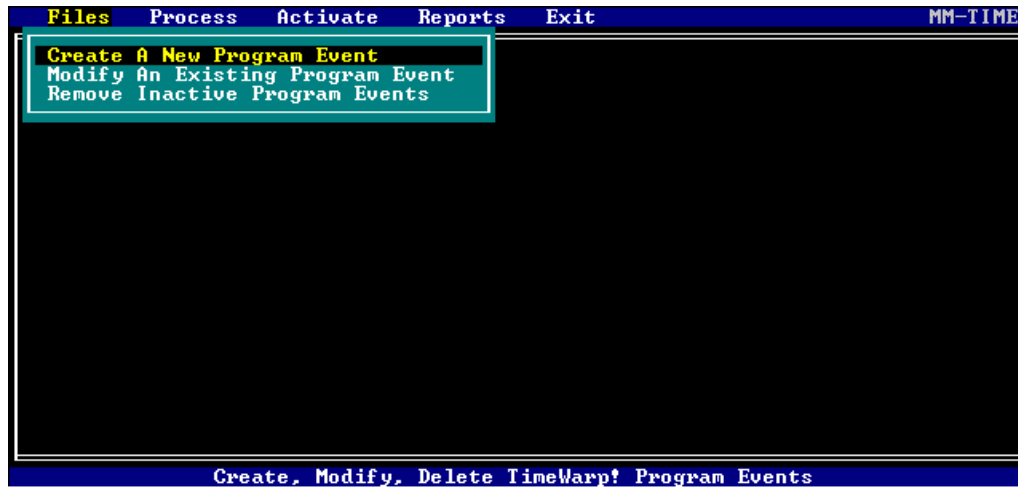
## II. Pristine TimeWarp! Main Menu

There are four possible menu selections to choose from the Pristine TimeWarp! Main Menu. They are listed in execution order to help provide a flow of operation for the maintenance and processing of Pristine TimeWarp! hard disk audio recordings. In order to execute a selection use the up and down arrow keys to highlight the desired menu selection, and then press the return key. Main Menu choices are as follows:



- Files ..... select to Create/Modify TimeWarp! Program Events
- Process ..... select to Process a new TimeWarp! Event Log
- Activate .... select to Activate the TimeWarp! Recorder  
(Only if recording on this computer.)
- Reports ..... select to print Reports on Program Events & Logs
- Exit ..... select to Exit Pristine TIMEWARP! Program

## 1.0 The Pristine TimeWarp! Files Menu

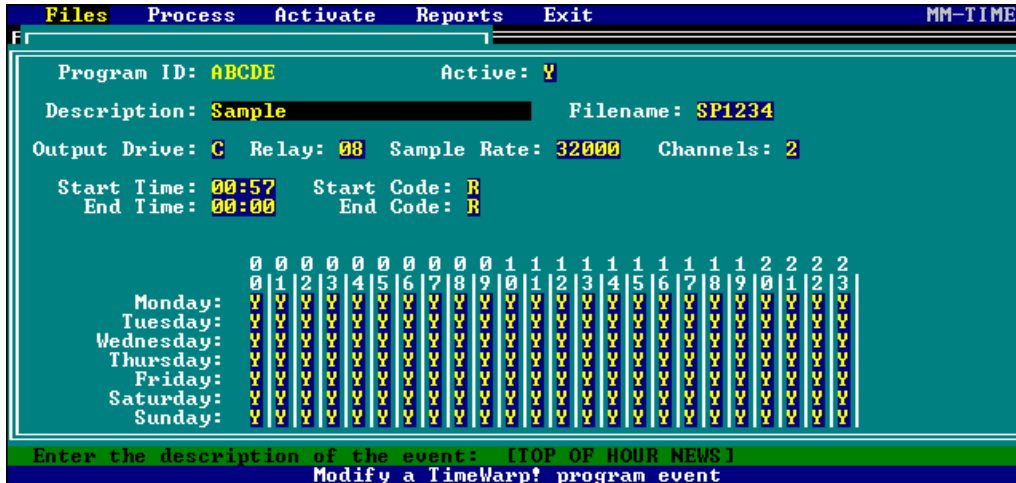


### Create, Modify, Remove TimeWarp! Program Events

This Menu is used to select the appropriate file maintenance routine (Create, Modify, Remove) for Pristine TimeWarp! Program Events. Your Files Menu choices are:

- Create ..... select to Create a new TimeWarp! Program Event
- Modify .... select to Modify an existing Program Event
- Remove ... select to Remove Inactive Program Events

## 1.1 Create a New Pristine TimeWarp! Program Event



This routine is used to create a new Pristine TimeWarp! Program Event. The Pristine TimeWarp! Program Event display screen is shown above, followed by a detailed explanation of each data item:

<u>Data Item</u>	<u>Description / Explanation</u>
------------------	----------------------------------

Program I.D.	The Pristine TimeWarp! Event I.D.
Active	Y = Yes (Active) or N = No (Inactive)
Description	The Description of this TimeWarp! Event
Filename	The Hard Disk Audio File (SP?????.SPC)

Note: If RapidFire is doing the ON-AIR recording, this file will automatically be in the 90,000 series. For example SP9001.SPC would be SP99001.SPC, SP1234.SPC would be SP91234.SPC.

Output Drive	C thru Z (C is the local hard disk, while G, H, etc. can be a network drive I.D. NOTE: Always use C:\ if RapidFire is doing the ON-AIR recording (not this computer).
--------------	---

Relay (to switch)	The Metrabyte Relay Number (from 08 - 19) to turn on/switch when recording this item. This is optional feature, but is required if both metrabyte hardware and multiple audio sources are used. If there are several different audio sources, then a different metrabyte output relay should be assigned for each source.
-------------------	---

Sample Rate        Choices are 48000, 44100, 32000, 24000, or 16000 (always use 48000 for DOLBY, and for MPEG only use 48000, 44100, or 32000).

Channels (1/2)     1 = Mono (Left channel) or 2 = Stereo

Start Time         The minute : second to initiate the audio recording process (see Start Code below).

Start Code         Three (3) Start options / codes are available:

R = Relay Input (Metrabyte Pin 35, Relay 2)  
Recording starts by input signal only.

T = Time (does not sample audio levels)  
Recording starts at the specified time.

A = Audio (samples audio levels at start time)  
Recording starts at first audio.

End Time          The minute : second to conclude the audio recording process (see End Code below).

End Code          Four (4) End / Stop options are available:

R = Relay Input (Metrabyte Pin 36, Relay 1)  
Recording ends / stops by input signal.

T = Time (does not sample audio levels)  
Recording stops at the specified time.

A = Audio (samples audio levels until end time)  
Recording stops when audio levels fall below the specified audio threshold.

D = Event Duration (only if started by relay input command)

Days/Hours to Record    Y = Yes (record this event this day & hour).  
                                  N = No (do not record this day and hour).

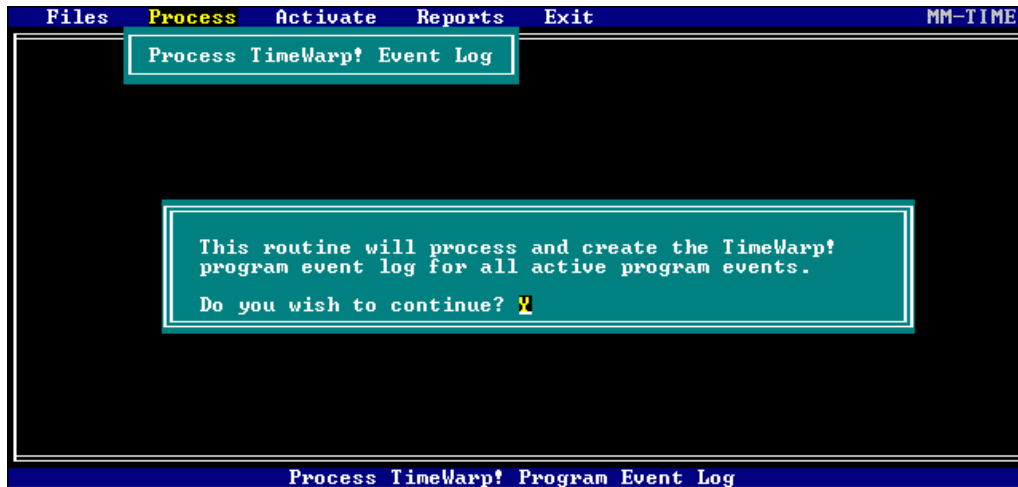
## 1.2 Modify an existing TimeWarp! Program Event

This routine is used to make changes to a previously created Pristine TimeWarp! Program Event. Refer to Section 1.1 for a detailed explanation of the Pristine TimeWarp! data items.

## 1.3 Remove Inactive TimeWarp! Program Events

This routine is used to remove (purge) any Pristine TimeWarp! program events that are designated as inactive (Active = N).

## 2.0 Process Pristine TimeWarp! Program Events



This routine is used to create a Pristine TimeWarp! Event log for the week based on the individual TimeWarp! program events.

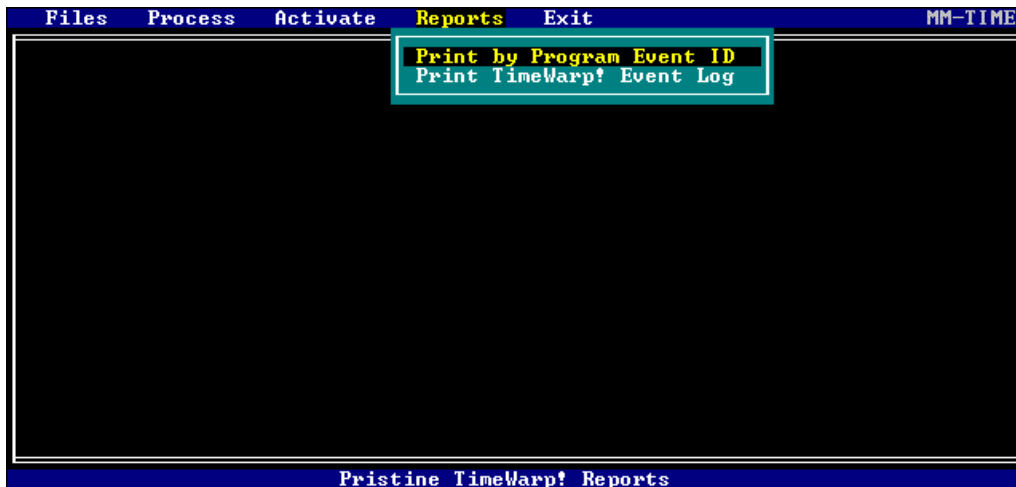
NOTE: If Pristine RapidFire is doing the ON-AIR recording, then the TimeWarp!! log file (TIMEWARP.DAT) should be copied into the \RAPID\DATAMEM directory of the RapidFire ON-AIR computer. (Usually O:\RAPID\DATAMEM).



### 3.0 Activate the Pristine TimeWarp! Recorder

This routine is used to activate the Pristine TimeWarp! Audio Recorder for all active Program Events. Only use this option if TimeWarp!!! recording is being done on this computer (not the on-air system).

### 4.0 Pristine TimeWarp! Reports Menu



The Pristine TimeWarp! Report Menu is used to print either a Program Event Report or a TimeWarp! Weekly Event Log Report.

#### 4.1 Pristine TimeWarp! Program Event Report

This Pristine TimeWarp! report will print any or all TimeWarp! Program Events (you enter the first and last items for selection) to either the screen, a disk file, or your printer.

#### 4.2 Pristine TimeWarp! Event Log Report

This Pristine TimeWarp! report will print a log of all TimeWarp! Program Events for scheduled for the week to either the screen, a disk file, or your printer.

### 5.0 EXIT Pristine TimeWarp!!!