

RapidFire Installation/Setup for Windows 98

Summary

This document outlines the installation and setup procedures for RapidFire for Windows 98 users. MS-DOS users should refer to the Installation and Setup for MS-DOS at www.pristinesys.com/support/rfdos.pdf.

For more information on Pristine Systems, Inc., or any of Pristine's products and services please contact tech@pristinesys.com.

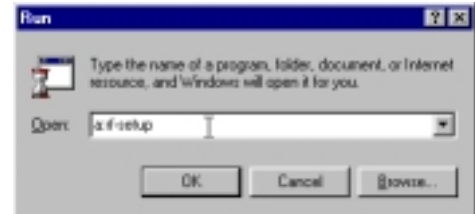
Document Outline

- I. Installation Instructions
- II. System Settings Setup Instructions
- III. RapidFire Shortcut Keys
- IV. FAQs

I. Installation Instructions

RapidFire should be installed in the C:\RAPID\ directory of the On-Air Computer. Insert the RapidFire Installation Diskette into the A-Drive. This batch file will create all necessary directories on the C-Drive and install the program files.

1. Select Start
2. Select Run
3. Type "A:\RF-SETUP" in the text box.



For RapidFire to work properly a \MUSICMGR and a \SPC directory must exist on each partition on the On-Air computer.

I. System Settings Setup Instructions

Below are instructions to optimize the Windows 98 Operating System and the CMOS settings for RapidFire to run efficiently.

Promise Card Installation

IDE Hard Drives should be connected to the Promise Card using high-density cables. The CD-ROM or CD-RW needs to be connected to the IDE #2 slot on the Motherboard. Once configuration of the PC is completed and RapidFire is ready to start playing, disable both OnBoard IDE slots in the CMOS.

Virtual Memory Settings

From the START menu click on settings and then on CONTROL PANEL. Double click the SYSTEM icon. On the PERFORMANCE tab click the VIRTUAL MEMORY button.

- Select "Let me verify my own virtual memory settings."
- Set the Minimum and Maximum values equal to the amount of RAM installed in the PC (usually 128 or 256).
- Click OK to save settings.



RapidFire Installation/Setup for Windows 98

Disk Caching

To turn off disk caching select the START menu, click on SETTINGS, and then click ON CONTROL PANEL. Double click the SYSTEM icon. On the PERFORMANCE tab click the FILE SYSTEM button, and then click the TROUBLESHOOTING tab.

- Check DISABLE WRITE BEHIND CACHING FOR ALL DRIVES.
- Click OK to save the settings.

To make changes to the Read Cache Settings:

From the START menu select RUN. Type SYSTEM.INI in the Run line and click OK. Page down until the section named [vcache]. Add the following lines under the [vcache] heading.

```
MinFileCache=8192  
MaxFileCache=8192
```

Then save and exit the file. For the settings to take place reboot the computer.

Read Ahead Optimization

To turn off Read-ahead optimization select the START menu, click on SETTINGS, and then click on CONTROL PANEL. Double click the SYSTEM icon. Click the PERFORMANCE tab.

- Click the FILE SYSTEM button
 - Select Network Server as the Typical Role of this Machine setting.
 - Move the Read-ahead Optimization slider to the left (off).
- Click the GRAPHICS button
 - Move the Hardware Acceleration slider to the left (off).

Disable Windows Power Management Settings

From the START menu select SETTINGS, and then select CONTROL PANEL. Double click the POWER MANAGEMENT icon. Make the following changes to the settings, and then click OK.

- Turn off Monitor = Never
- Turn off Hard Drive = Never

RapidFire Installation/Setup for Windows 98

Microsoft File Server Client

Select the START menu, and click on SETTINGS, and then click on CONTROL PANEL. Double click the NETWORK icon. You will need a Windows 98-SE CD-ROM to finish this section.

- To add the Microsoft NetBEUI Protocol.
 - Click the Add button.
 - Select Protocol and click add.
 - Select Microsoft from the Manufacturers list and NetBEUI from the Network Protocols list, then click OK.
- Select File and Printer Sharing for Microsoft Networks Client from the “The following network components are installed” box and click the Properties button. On the advanced tab select Browse Master from the Property Box and set the Value to Disabled.
- To disable the TCP/IP Protocol.
 - Select the TCP/IP Protocol from the “The following network components are installed” box and then click the Remove button.
- To disable the NWLink Protocol.
 - Select the NWLink Protocol from the “The following network components are installed” box and then click the Remove button.

CMOS Settings

Reboot the Machine and enter the CMOS menu by pressing delete during the Memory Test.

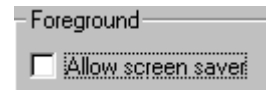
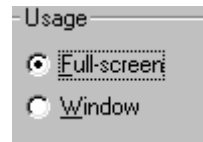
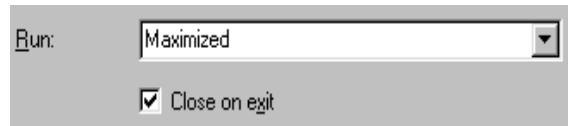
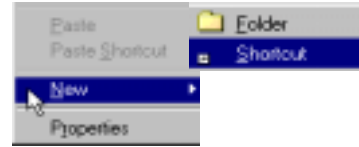
- Select the PERIPHERAL menu and turn off/disable On-Board Serial Ports A and B.
- Once configuration of the PC is completed and RapidFire is ready to start playing, select the PERIPHERAL menu disable both OnBoard IDE slots on the motherboard.
- Select the CHIPSET menu and Enable the USB Function.
- Select the ADVANCED menu and Enable the PS/2 Mouse Support. The Mouse/Trackball should be connected to the PS/2 port, and the mouse install line in the PLAY.BAT file should read C:\MOUSE\MSCMOUSE.COM /1 /A3. Windows will redirect the mouse to the PS/2 port since Serial Ports 1 and 2 are disabled in the CMOS.
- Setting up the CMOS for ISA Audio Cards.
 - Enter the CMOS by pressing the Delete button when the PC is booting up. Select the PCI/PnP Menu and manually configure the following parameters.

PCI Slot 1 Priority	= 12
PCI Slot 2 Priority	= 11
PCI Slot 3 Priority	= 10
PCI Slot 4 Priority	= 9
IRQ 3	= ISA/EISA or Legacy ISA
IRQ 4	= ISA/EISA or Legacy ISA
IRQ 5	= ISA/EISA or Legacy ISA
IRQ 7	= ISA/EISA or Legacy ISA
All other IRQ settings	= PCI
 - Press Esc to exit to the Main CMOS menu, select Save and Exit.

RapidFire Installation/Setup for Windows 98

Creating a Shortcut Icon for Windows 98 users

1. Right-click on a blank area on the desktop, select New → Shortcut
2. The Command line is “C:\RAPID\PLAY.BAT”, click next and follow the prompts to select an icon name and a shortcut icon.
3. Right-click on the icon, select Properties
 - A. Program Tab:
 - Change Run: to Maximized
 - Initialize close on exit
 - Click on the Advanced button, select Prevent MS-DOS based programs from detecting Windows and deselect suggest MS-DOS mode as necessary.
 - B. Screen Tab
 - C. Misc. Tab
 - Disable Allow Screen Saver.
4. To start the application double-click on the RapidFire Icon on the Desktop.



Setting up the Audio Driver

At an MS-DOS prompt type the following commands to setup the proper audio drivers for the audio cards in use. See the sample PLAY.BAT file below.

```
CD \RAPID
```

```
EDIT PLAY.BAT
```

Change the audio drivers to the appropriate audio driver:

- ✓ Use SX25 for: SX-7, SX-9, and SX-23e
- ✓ Use SX34 for: SX-34, SX-35, and SX-36

Save and exit the file, press <ALT + F> to select the file menu, then press the “X” key to exit. Press the “Y” key for Yes to save the file.

Sample PLAY.BAT file

```
C:\AUDIODRV\SX25 /U
```

```
C:\MOUSE\MSCMOUSE.COM /1 /A3
```

```
C:\AUDIODRV\SX25 /B32 /B32 /B32 /B32
```

```
RAPID
```

```
C:\AUDIODRV\SX25 /U
```

```
C:\MOUSE\MSCMOUSE.COM /U
```



RapidFire Installation/Setup for Windows 98

RAPID.INI Settings

To make changes to the RAPID.INI file type the following commands at an MS-DOS prompt:

```
\RAPID
```

```
EDIT RAPID.INI
```

Make the appropriate changes to the rapid.ini based on the station's format. Save and exit the file press <ALT + F> to select the file menu. Press the "X" key to exit, then press "Y" for Yes to save the file. Below is a sample Rapid.ini file with parameter definitions listed to the right.

```
AudioBaseAddressCard1      = 1      1=180; 2=280; 3=380; 4=220; 5=300; 6=320
AudioInterruptCard1        = 3      2, 3, 5, 10, 11, 12
AudioBaseAddressCard2      = 2      1=180; 2=280; 3=380; 4=220; 5=300; 6=320
AudioInterruptCard2        = 5      2, 3, 5, 10, 11, 12
AudioBaseAddressCard3      = 0      1=180; 2=280; 3=380; 4=220; 5=300; 6=320
AudioInterruptCard3        = 0      2, 3, 5, 10, 11, 12
AudioSampleRate            = 2      1 = 48000; 2 = 44100; 3 = 32000
AudioFormat                = 1      1 = MPEG; 2 = DOLBY-AC2
AudioChannels              = 2      1 = Mono; 2 = Stereo
AutoBreakMinutesDefault    = 58     0 - 59
AutoBreakSecondsDefault    = 30     0 - 59
AutoBreakTypeDefault       = A      A=-GO-END;B=-GO-OUT;C=-GO-TOP
AutoStartMode              = 0      0 = Live Mode; 1 = Auto Mode
MetrabyteBaseAddress       = 3      0 = No Card; 1 = 310; 2 = 320; 3 = 330
MetrabyteCardType         = 0      0 = No Card; 1 = PIO-12/24; 2 = PIO-96
MetrabyteSignalDuration    = 3      0 - 10
SatelliteLiners123        = 0      0 = Off; 1 = On
SatelliteLiners456        = 0      0 = Off; 1 = On
TimeWarpActive             = 1      0 = Off; 1 = On
VolumeOutputDefaultPlayer1 = 10     0 - 10
VolumeInputDefaultPlayer1  = 10     0 - 10
VolumeFadeDefaultPlayer1   = 6      0 - 10
VolumeOutputDefaultPlayer2 = 10     0 - 10
VolumeInputDefaultPlayer2  = 10     0 - 10
VolumeFadeDefaultPlayer2   = 6      0 - 10
VolumeOutputDefaultPlayer3 = 10     0 - 10
VolumeInputDefaultPlayer3  = 10     0 - 10
VolumeFadeDefaultPlayer3   = 6      0 - 10
VolumeOutputDefaultPlayer4 = 10     0 - 10
VolumeInputDefaultPlayer4  = 10     0 - 10
VolumeFadeDefaultPlayer4   = 6      0 - 10
SyncTimeToExternalSource   = 0      0 = Off; 1 = On; 2 = GPS
SyncTimeMinutes            = 44     0 - 59
SyncTimeSeconds            = 50     0 - 59
DaylightSavingsOption      = 1      0 = Off; 1 = On
DaylightSpringMonth        = 4
DaylightSpringDay          = 1
DaylightFallMonth          = 10
DaylightFallDay            = 28
NetworkDriveLetter         = C
StationCallLetters         = Rapid
ActiveEditor               = 0      0 = Off; 1 = On
VUMeterRate                = 20     15 = 200, 20 = 400; 25 = 800
iAutoFileChecker           = 0      0 = Off; 1 = On
```



RapidFire Installation/Setup for Windows 98

II. Shortcut Keys

RapidFire has a few shortcut keys that are helpful when operating the application.

<u>Key</u>	<u>Function</u>	<u>Key</u>	<u>Function</u>
ESC	Live/Auto Modes		
F1	Player 1 Play	F5	Player 1 Stop
F2	Player 2 Play	F6	Player 2 Stop
F3	Player 3 Play	F7	Player 3 Stop
F4	Player 4 Play	F8	Player 4 Stop

III. FAQs

1. If Time Sync is not working what do I check?

Following are a few things to check:

- Check to see if the SyncTimeToExternalSource code in the RAPID.INI is turned on (equals 1 or 2).
- If using SyncTimeToExternalSource = 1, then check the SyncTimeMinutes and SyncTimeSeconds. Also, verify that you are receiving a pulse. If you are not receiving a pulse, check with the service provider to verify that you are setup correctly with the service provider to receive the pulse.
- If using SyncTimeToExternalSource = 2 (GPS setting), check the GPS receiver to verify that a signal is being received.

2. How do I test to see if I have an audio conflict?

Perform the Four-Player Test to see if there is a conflict between the Audio Cards.

- Put RapidFire in Live Mode.
- Load an audio file in all four Players.
- Press <F1>, <F2>, <F3>, and <F4>.
- Press <F8>, check to see if **only** Player 4 (bottom right) stopped playing. If only Player 4 stopped, press <F4> and proceed to step E below. If more than one player stopped, check your RAPID.INI and CMOS settings.
- Press <F7>, check to see if **only** Player 3 (bottom left) stopped playing. If only Player 3 stopped, press <F3> and proceed to step F below. If more than one player stopped, check your RAPID.INI and CMOS settings.
- Press <F6>, check to see if **only** Player 2 (top right) stopped playing. If only Player 2 stopped, press <F2> and proceed to step G below. If more than one player stopped, check your RAPID.INI and CMOS settings.
- Press <F5>, check to see if **only** Player 1 (top left) stopped playing. If only Player 1 stopped, press <F1>. There is no conflict between your Audio Cards. If more than one player stopped, check your RAPID.INI and CMOS settings.

RapidFire Installation/Setup for Windows 98

3. Why doesn't my mouse work?

Verify that the mouse is plugged into the PS/2 slot in the back of the PC and the serial ports are disabled in the CMOS. If the mouse is inserted correctly, check the PLAY.BAT for proper mouse setup. Below is the mouse install command you should use.

PS/2

C:\MOUSE\MSCMOUSE.COM /1 /A3



4. How do I find out what my AutoBreak settings are?

At a MS-DOS prompt type the following commands:

```
CD \RAPID\DATAMEM
```

```
DIR RF_ABRKS.DAT
```

If the file is found, edit the file to view the AutoBreak settings. For more information about AutoBreaks, please see our RapidFire AutoBreak white paper at <http://www.pristinesys.com/support/AutoBreak.pdf>.

If the RF_ABRDKS.DAT file is not found, RapidFire uses the Default AutoBreak Setting in the RAPID.INI file.

5. Why doesn't RF-Edit start when I click on the Editor button?

Check the RAPID.INI for the ActiveEditor parameter setting.

```
ActiveEditor          = 1    (0 = Off and 1 = On)
```

6. How come my music members do not appear in the right Quick Pick menus?

In MusicPlus, check the MP_keyword9. Enter one of the Quick Pick Menu Categories below:

MUSIC	LINGER	SPOT
PROMO	JINGLE	PSA

Once all music members have been modified with the correct Quick Pick Menu Category, the new data will need to be transferred. Below are steps to transfer the new data to the On-Air computer for immediate use.

- In MusicPlus, select RapidFire Playlist from the Programmer menu.
- RapidFire data only = Y.
- In RapidFire, click the Options button, select Refresh Data.

7. How do setup RapidFire to Automatically start at boot-up?

To have RapidFire automatically start at Windows startup, save a copy of the RapidFire icon from the desktop in the C:\WINDOWS\START MENU\PROGRAMS\STARTUP directory of the On-Air computer.

Also, to have RapidFire start up in Auto mode, make sure that the AutoStartMode = 1 in the RAPID.INI.