

The PRISTINE Audio Commander

Reference Guide & Installation Manual

The screenshot displays the PRISTINE Audio Commander interface. On the left, a file list shows various audio files (SP10001 to SP10018) with columns for Name, Size, and Date. The file SP10002 is highlighted. On the right, a purple box displays file details for SP10002.SPC, including description (HI-N-R-G-MIX), sample rate (48000), sample size (16 BITS), sample format (MPEG LAYER2 KB=096), channels (STEREO), length (07:50.47), and disk space (317.55 Mb.). Below this, a green digital display shows the time 03:30. A red bar indicates the file is playing. At the bottom, a dB level indicator shows a scale from -20 to +3 OVER, with a yellow bar indicating the current level. The status bar at the very bottom contains menu options: 1 Trim, 2 Edit Hd, 3 Record, 4 Play, 5 Pl end, 6 New SPC, 7 Setting, 8 Exit.

Name	Size	Date
.	[UP-DIR]	
SP10001 SPC	11200768	97/12/23
SP10002 SPC	11332864	97/12/23
SP10003 SPC	9361664	97/12/23
SP10004 SPC	8905984	97/12/23
SP10005 SPC	10708224	97/12/23
SP10006 SPC	4404480	97/12/23
SP10007 SPC	4788480	97/12/23
SP10008 SPC	4483328	97/12/23
SP10009 SPC	5189888	97/12/23
SP10010 SPC	5415168	97/12/23
SP10011 SPC	5199104	97/12/23
SP10012 SPC	5879040	97/12/23
SP10013 SPC	5707008	97/12/23
SP10014 SPC	5261568	97/12/23
SP10015 SPC	5008640	97/12/23
SP10016 SPC	4088064	97/12/23
SP10017 SPC	5876992	97/12/23
SP10018 SPC	5685504	97/12/23
SP10002	11332864	97/12/23

file: SP10002.SPC
description: HI-N-R-G-MIX
sample rate: 48000
sample size: 16 BITS
sample format: MPEG LAYER2 KB=096
channels: STEREO
length: 07:50.47
diskspace: 317.55 Mb.

03:30

* * Playing.. * *

dB -20 -10 -5 -3 -1 0 +3 OVER
L
R

1 Trim 2 Edit Hd 3 Record 4 Play 5 Pl end 6 New SPC 7 Setting 8 Exit

PRISTINE SYSTEMS, INC.

PRISTINE Audio Commander - Table of Contents

	<u>Page</u>
1.0 Installation	1
1.1 Installing the Software on your Computer	1
1.2 Setting up the Antex Audio Board	1
1.3 Configuration Settings	2
1.3.1 Base Address	2
1.3.2 Interrupt Number	2
1.3.3 Channels	2
1.3.4 Sample Rate	2
1.3.5 Sample Format	2
1.3.6 Trim Beginning	2
1.3.7 Start Offset	3
1.3.8 Trim Ending	3
1.3.9 Auto Start Threshold	3
1.3.10 Playback Timer	3
1.3.11 Default Path for Audio Files	3
1.3.12 Default Path for Temporary Files	3
1.3.13 Select A Desired Language	3
2.0 Audio File Manager	4
2.1 Screen Features	4
2.2 Navigating in the Audio File Manager	5
3.0 EXIT Audio Commander	5
4.0 Compatibility and Performance	6
4.1 Network	6
4.2 Copying of Audio Files	6
4.3 Direct Recording on Network Server	6

1.0 Installation

1.1 Installing the Software on your computer

To install Audio Commander to your hard disk begin at the C:> prompt ,
by typing: **A:AC-SETUP**

This will copy all the necessary files to your hard disk into the correct directories
and set up the basic batch files for starting Audio Commander.

NOTE: Some batch files such as PSI-AC.BAT will probably need to be edited to
reflect correct drives and paths according to the machine you are installing on.

1.2 Setting up the Antex Audio Board

Install the Antex audio board into one of your computer's available 16 bit slots. The Antex SX-7, SX-20, SX-23, SX-25, SX-34, SX-35, and SX-36 audio boards are equipped with software configurable base address and interrupt settings. For these boards, you do not have to set any jumpers on the board itself, the software does this for you. On all other boards, jumpers must be set on the board. Please consult the user manual that came with the board to do this.

1.3 Configuration Settings



Access the Settings menu from the main menu of The Audio Commander by pressing "F9" in the main menu. Then use the arrow keys to move down and select the item with ENTER.

Important Notes before you begin configuration:

Not all of the settings provided in the settings menu of The Audio Commander are available on each audio board. Before changing these settings, you must consult the specifications of your audio board.

If you are using the software configurable Antex boards, make sure the base address and interrupt settings are the same as in other programs like Pristine Voicetraxx or S.A.W.

1.3.1 Base Address (Base I/O)

Select the audio board base address you want to use (180 or 280).

1.3.2 Interrupt Number (IRQ)

Select the audio board interrupt number you want to use (2, 5 or any available interrupt/IRQ).

1.3.3 Channels

Select the number of channels you want to use. STEREO is two channels, MONO is one channel.

1.3.4 Sample Rate

Set the sample rate you want to use. This sample rate is used for creating new audio files.

1.3.5 Sample Format

Set the sample format you want to use. This sample format is used for creating new audio files.

1.3.6 Trim Beginning

Select Trim Beginning if you want The Audio Commander to automatically trim any beginning silence off an audio file after recording it.

1.3.7 Start Offset (In Milliseconds)

With Start Offset you can set the number of milliseconds for the trim begin function.

1.3.8 Trim Ending

Select Trim Ending if you want The Audio Commander to automatically trim the ending silence off an audio file after recording it.

1.3.9 Auto Start Threshold

With the Auto Start Threshold, you can set the audio threshold level for the Auto Start function. When in the auto record mode, if the audio level is higher than this setting, the playlist recorder will automatically start recording at the specified auto level.

1.3.10 Playback Timer

The Playback Timer counts the elapsed time UP or DOWN.

1.3.11 Default Path for Audio Files

The Default path for audio files, (where your audio files are located on the computer's hard drive) usually \MUSICMGR.

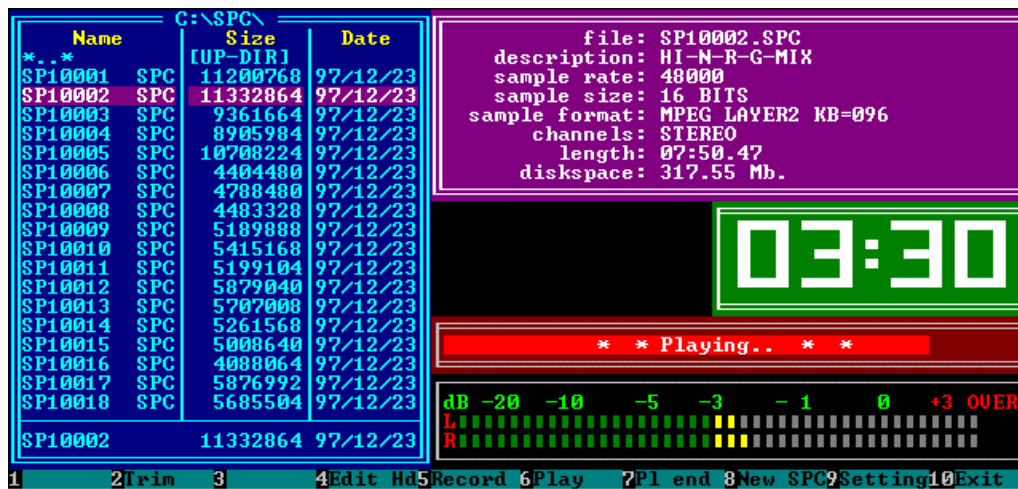
1.3.12 Default Path for Temporary Files

The Default path for temporary files, (where your temporary files are located on the computer's hard drive) usually \MUSICMGR.

1.3.13 Select a Desired Language

You may select between either English or Dutch as your desired language for Audio Commander.

2.0 Audio File Manager



2.1 Screen Features

On the left hand side of the screen, the current directory is displayed. A file status box displays information about the current audio file on the right hand side of the screen. Depending on status (playing, recording, idle, etc.), a display of function key options will be shown near the bottom.

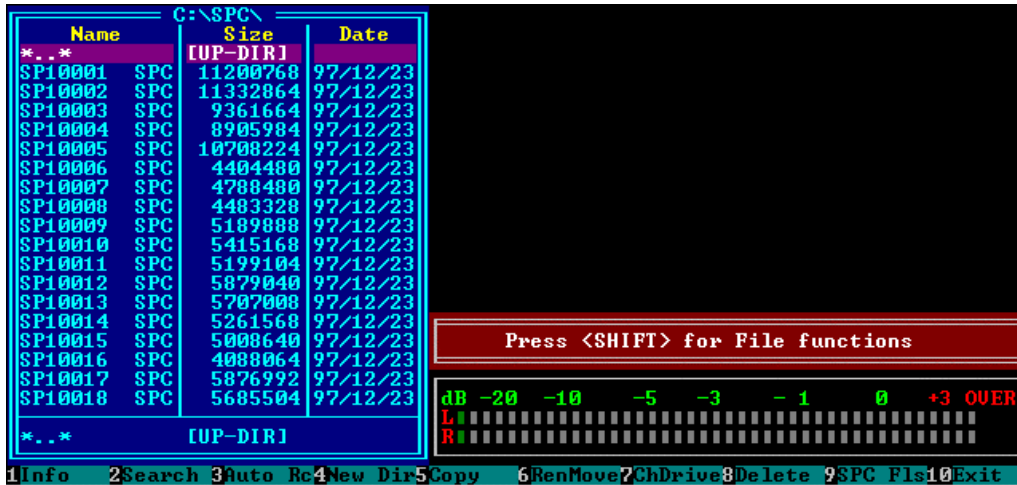
A time box is displayed at the right of the screen during both playback and recording, showing the time of the current audio item. At the bottom of the screen, a list is displayed with available function keys. At the lower right side of the screen, a large VU meter is displayed for monitoring of input and output levels.

2.2 Navigating in the Audio File Manager

When in the Audio File Manger mode, the following keys may be used:

- | | |
|-----|---|
| F2 | Trim the audio file. |
| F4 | Enter a description for the audio file. |
| F5 | Record over an existing audio file. |
| F6 | Play an existing audio file. |
| F7 | Play the end or last 10 seconds of an audio file. |
| F8 | Record a new audio file. |
| F9 | Enter the Settings menu. |
| F10 | Exit The Audio Commander. |

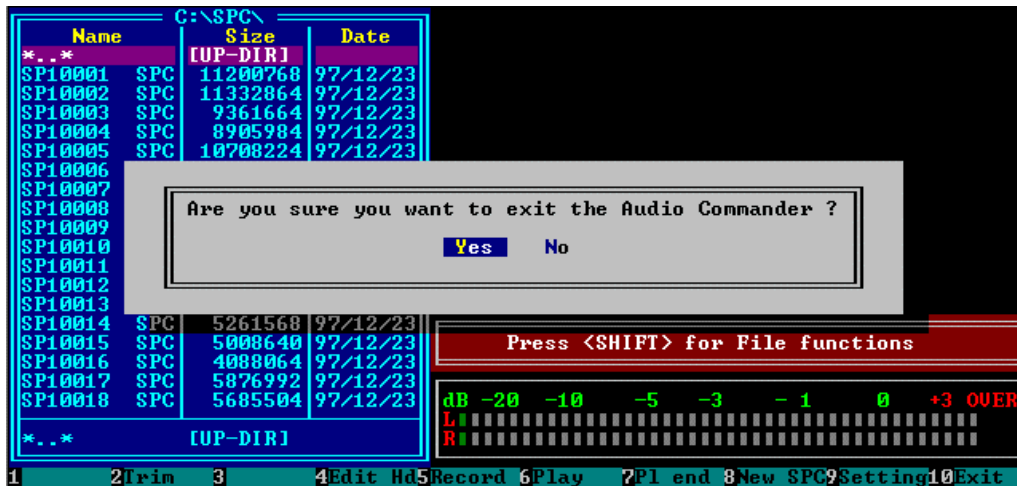
2.21 Navigating the File Manager Mode



When in the File Manager mode, the following keys may be used:

Up/Down Key	Move one item Up/Down
Page Up/Down	Move one page Up/Down
Shift-F2	Search for an audio file.
Shift-F3	Auto record an audio file.
Shift-F4	Change between audio file directories.
Shift-F5	Copy an audio file.
Shift-F6	Rename an audio file or move it to a different directory.
Shift-F7	Change the current drive letter.
Shift-F8	Delete the currently selected audio file.
Shift-F9	Toggle the display of all files or .SPC audio files.

3.0 Exiting Audio Commander



F10 Exit The Audio Commander

4.0 Compatibility and Performance

4.1 Network

The Audio Commander can be used on a network (we recommend using LANTASTIC).

When using The Audio Commander on a network, performance is limited to the type of audio board used, and the speed of the computer and network. The Pristine Audio Commander may not operate properly on all networks, but we have successfully tested it with Lantastic 4.x through 7.x.

4.2 Copying of Audio Files

If you are not using an Antex Series-3 audio card, (SX-20, SX-23, SX-9, SX-7, SX-34, SX-35, SX-36) DO NOT transfer audio files during the on-air playback of hard disk audio.

The best way to copy audio files from production to the On-Air computer is by using the Pristine Transfer Plus program.

Currently, the only audio boards that supports copying of audio files to the server during playback of audio by the server are the Antex Series-3 cards. We highly recommend the use of these audio boards, because of their stability, low system demands, and audio quality when using the MPEG Layer II and DOLBY AC-2 data compression.

4.3 Direct Recording to the ON-AIR Server

We have successfully tested recording directly on the server, while the server was playing back audio, using the Antex Series-3 audio cards with either MPEG II or DOLBY compressed audio. Results may vary with system performance.